

ENGINE AIR INC

AAR M1003 Certified

Remanufactured Radiators for EMD & GE Locomotives

The Remanufacturing Process:



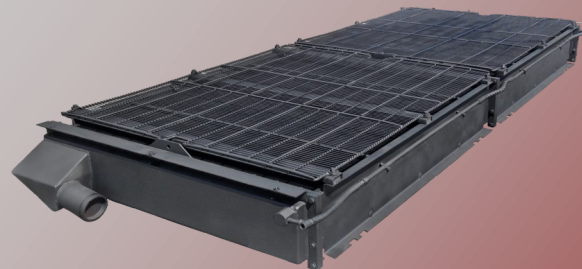
- ◆ Radiators are remanufactured by first completely cleaning & visually inspecting the unit for leaks while applying pressure to the core.
- ◆ All identified leaking tubes are mechanically sealed.
- ◆ If the number of sealed tubes exceeds the OEM standard for the maximum allowable, a replacement core is offered in the remanufacturing process.
- ◆ Upon completion of either process, a final pressure check is made.
- ◆ The radiator is then completely dried, painted, cardboard wrapped & skidded per customer request for shipment.

**Repair & Return & New
Unit Pricing is Available**

#8127126	Single 4"
#40037925	Double 4"
#40037937	Triple 4"
#8490482	Single 6"
#9583761	Double 6"
#9583760	Triple 6"
#9504784	Triple 6"
#9575387	Triple 8"
#40045650	Quad 8"

Many other part numbers are available

Radiators For GE Engines
#41D711033G10, #84D701689P1,
#41D12040G4



**Represented by
JMA Railroad Supply**

835 E 10th Street, Seymour, IN 47274
Phone: (812) 522-7200 Fax: (812) 522-1150
Email: jmasales@jmasales.com