

JMA RAILROAD SUPPLY co.



2024

835 E. 10TH ST. SEYMOUR, IN 47274
(812)522-7200 | WWW.JMARAIL.COM

INDEX

Page



Gulf Coast Turbocharger has been serving the rail and marine markets since 2003. Our combined experience of over 50 years will provide the best quality turbos possible. We meet or exceed all OEM specifications and are very stringent in all of our rebuild processes.

4



MSC provides maintenance, repair, and operating supplies for locomotive, car and track. MSC provides a complete turn-key program for your company's inventory management. Their service is designed to reduce the "wastes" in your organization, while keeping you on track.

5



POWER PARTS SIGN COMPANY
A DIVISION OF RI-DEL MFG. INC.

PPSC provides signs, decals and other safety products for the entire railroad industry. Custom signs, fusee holders, cross bucks, and etch and fill plates are also available.

6



With decades of experience providing locomotive batteries, JMA Rail Products proudly presents its superior locomotive battery. Having over 40 years of battery design and knowledge, we have created a true locomotive "Starting Battery."

7



EngineAir is a Remanufacturer of EMD diesel roots-style blowers, EMD aftercoolers, GE Intercoolers, GE and EMD oil coolers, GE and EMD water pumps, EMD oil pumps, GE and EMD fuel pre-heaters, EMD governor drives, GE and EMD radiators, EMD pressure pumps, and EMD scavenge pumps. EngineAir is AAR M1003 certified.

8, 9



Hillcrest Camshaft supplies diesel engine rebuilders all over the world with new and precision remanufactured camshafts, crankshafts, fuel injection cams and lifters. Hillcrest products have earned a reputation of quality, because the processes they use make them more durable and ensure a longer life.

10, 11



JMA Rail Products supplies a complete line of locomotive components including air compressors, power assemblies, traction motors, filters, main generators, brake valves and composite brake shoes just to name a few.

12, 13



New Vision manufactures Ditch Light Kits, replacement parts, replacement bulbs, Locomotive Ceiling Kits, Locomotive LED bulbs, traction motor lugs, blade to gladhand adapters, and ditch light

14, 15



United Safety designs, engineers, and manufactures high quality seats for the locomotive industry. As a leader in the industry, United Safety continues to develop the most durable and ergonomically designed seats to reduce fatigue and stress. United Safety has been ISO registered since 1997.

16, 17



Abloy manufactures high security locks and locking systems for the rail industry. Ideal for use in rail yard maintenance areas, and on gates, switches, signals, communication towers, locomotives and rail cars.

18



JMA Railroad Supply and all their clients provide aftermarket replacement parts for EMD and GE Locomotives.

We do not claim to be an authorized distributor for EMD or GE nor claim to offer any OEM factory parts.

President's Message

Since becoming president of JMA Railroad Supply in 2012, we have continued to move JMA forward with the same values and principles as Jack Matthew's, the founder of JMA, established back in 1984. Our focus is to serve our customer's needs by providing quality products, at a competitive price, in a timely manner, and to provide the best customer service possible.

Originally started in 1984 as a consulting company working in various industrial segments, JMA has evolved into a Manufacturers Representative Sales Company, providing railroad supplies and equipment to the Short Lines, Industrials, Rebuilders, and Class I railroads. We have strived to align ourselves with quality companies that have the same values of taking care of the customer as JMA does.

JMA currently represents 10 quality manufacturers to the Rail Industry that supply everything from \$5 replacement parts to complete locomotives. With 40 years of commitment to the Rail Industry, our goal is to continue to expand our product offering and provide the best customer service possible.

"From coupler to coupler, we have you covered."

Sincerely,
Bill Stevens



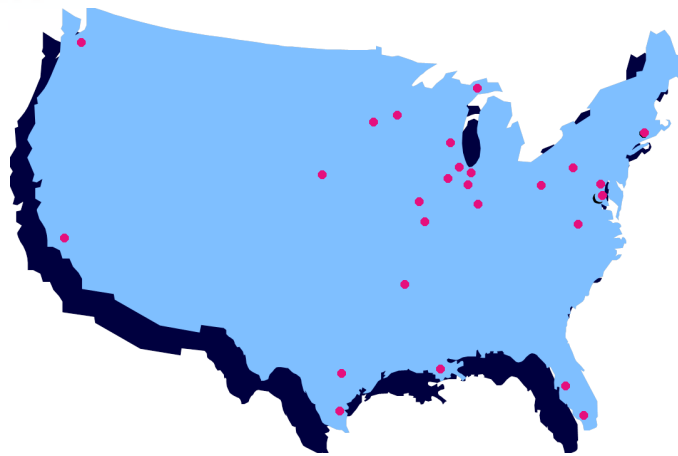
President
JMA Railroad Supply



Mission Statement

JMA Railroad Supply Company is committed to representing manufacturers that provide the highest quality products to the Railroad Industry with competitive pricing. It is our goal to provide the best possible customer service in the quickest possible time in order to fulfill our customer's requirements. JMA will continuously strive to improve its ability to provide excellent service through cultivating relationships with its customers and clients.

Shipping Locations



Contact Us

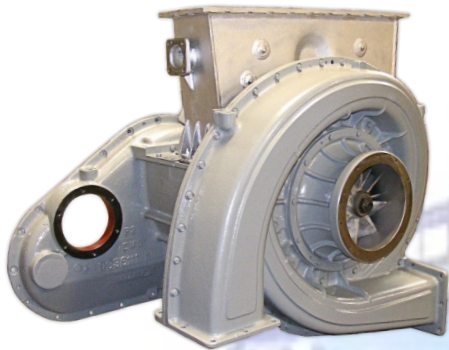
(812)522-7200 or Email jmasales@jmasales.com



Over 50 years
of combined
experience!

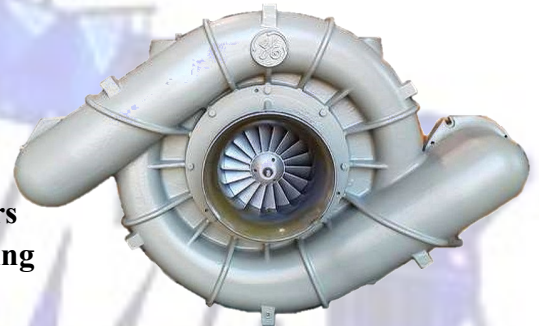


Serving the
Rail & Marine
market since 2003



Gulf Coast Turbocharger has been serving the rail and marine markets since 2003. Our combined experience of over 60 years will provide the best quality turbos possible. We meet or exceed all OEM specifications and are very stringent in all of our rebuild processes.

We have a core pool in place for a variety of different turbos. If we are unable to offer UTEX we can offer the Repair & Return options in a timely manner.

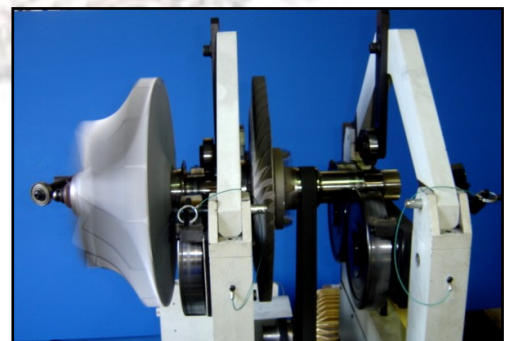


- 2 Year Warranty
- Meets or exceeds all OEM rebuild specifications
- Dynamically balanced rotors far exceeding acceptable parameters
- Incorporates magnetic particle & florescent dye penetration testing for part inspection
- Core pool for *Unit Exchange, UTEX*

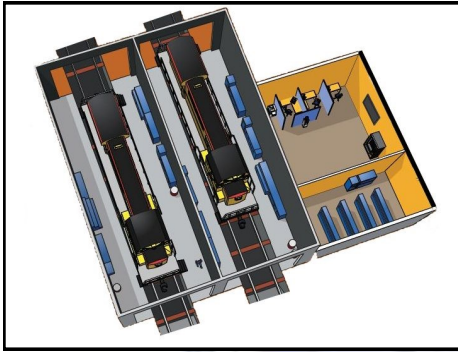
Our *Hofmann Horizontal Balancer* enables us to balance our rotors to far exceed the original OEM specifications for longer lasting turbos!

Servicing EMD, GE, and Alco!

Turbo parts are also available!



Parts Inventory Management



Our service model is designed to reduce the “waste” in your organization, while keeping you on track. Whether you need a complete organizational overhaul or you simply need to rid your system of obsolete products, we tailor our services to meet your needs! We believe in vendor managed... not vendor controlled. You select the programs that fit your operation and we'll do the rest.

Car Shop

- Fasteners
- 300 lb. Pipe Fittings, Nipples and Valves
- Air Brake Hardware
- Air Brake Flanges
- Air Brake Gaskets
- Welding Supplies

Locomotive Repair

- Greener Chemical Line
- Hydraulics
- Brass Fittings
- Terminals
- Degreasers
- Lubricants
- Mini Bulbs

Work Equipment

- Hydraulic Hoses
- Air Brake Fittings
- Spray Paints
- Aerosol Chemicals
- Lights
- Grinding Wheels
- Fasteners
- Taps/Drill Bits
- Radiator Hoses

Engineering

- Maintenance Supplies
- Storage Equipment
- First Aid Supplies
- Frog Bolts
- Switch Bolts
- Track Bolts
- Bridge Bolts

We believe in vendor managed... not vendor controlled.

Call (812)522-7200
Email jmasales@jmasales.com



POWER PARTS *Sign* COMPANY

A DIVISION OF RI-DEL MFG, INC.

Track/MOW
Signs

Whatever your NEEDS may be ...

POWER PARTS Sign COMPANY
manufacturers more than just signs!
Ask us about volume pricing for our
crew pac holders, decals, fusee cases,
blue flags, targets and more!



Fusee Cans
#50026-23



#50003-EG-5-2



#50030-19



#1900/ Racor



#5001

- Railroad Signs
- Railroad Etch & Fill Plates
- Railroad Equipment
- Decals
- Railroad Marking Kits
- Municipal Signs
- Porcelain Enamel Signs
- Letters
- Numbers
- Special Orders
- Blue Flags



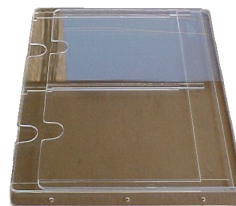
Locomotive Number Boards
#8146588
#8182582



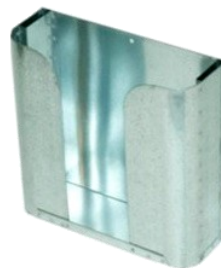
Flag Holders
#50026-18



Turbo Screen
#9557143



Card Holders
#90260-4



Crew Pack Holders
#50026-34



JMAXX

Locomotive Batteries

With over a decade of experience providing locomotive batteries, we have created a true locomotive “Starting Battery!” JMAXX provides a battery line that is built to the highest quality standards.



19% more lead per plate than our leading competitor!

- ◆ Heaviest Strap/Intercell Connectors in the Industry!
- ◆ Double layer of Glass Wrapping for Maximum Material Retention and Life!
- ◆ Cells are 100% cycled prior to shipment to insure Full Capacity!
- ◆ Cell Equalization prior to shipment for Longer Life!
- ◆ Custom Box Grid design on our plates for Maximum Capacity and Life!

JMA P/N	Volts	8 HR Rating	Length	Width	Height
JMA-M4513	8	333	24"	7.5"	18"
JMA-M4517	8	443	28"	8"	18"
JMA-M4525	8	667	28"	10.5"	18"
JMA-U519	32	500	34"	27"	21"
JMA-U523EP*	32	610	34"	27"	21"
JMA-U525	32	667	43.5"	27"	21"
JMA-U531EP*	32	832	43.5"	27"	21"

* Denotes Elite Power Battery

* Our JMAXX Elite Power battery is the same size battery with 22-25% more output than our standard battery

6 Year Warranty! 2 Year Full 4 Year Pro-Rated



Call (812)522-7200
Email jmasales@jmasales.com

ENGINEAIR INC

Many options available! Call us for details!

New, Unit Exchange, Rebuilt/Outright, & Repair/Return

Roots Blowers



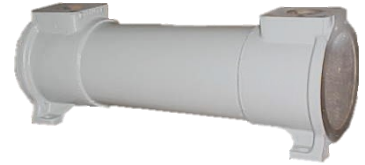
#8369676 Right Bank
Replaces
#8069492, #9080512,
#8379666, #8074274
#8369677 Left Bank
Replaces
#8069433, #9080513,
#8074273, #8379667

Oil Coolers



Oil Coolers for GE Engines

#41D711310G2
#41D721253G1
#41D725794G1
#41D728627G2
#41D723279G2
#84A213197AGP2 (EVO)



Switch Engine/ Tube & Bundle Oil Cooler

27" 9544026/8225303
36" 9544027, 8373361, 8365865
40 1/2" 9544028

Auxiliary Generator Drive



Turbo
#8460738
or
#40044946



Roots Blown
#8084664

Governor Drive

EMD #40085329,
8175893

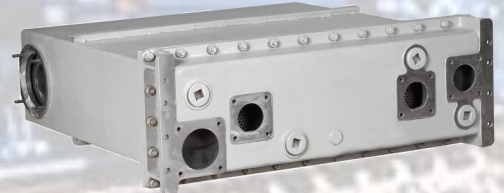


Intercoolers for GE Engines

#128 x 1360	#128 x 1361
#128 x 1649	#128 x 1650
#128 x 1692	#128 x 1693
#128 x 1779	#128 x 1780
#128 x 1877	#128 x 1878

Oil Coolers for EMD Engines

#40005228 6"	#8272136 6"
#8412061 6"	#9558515 6"
#9259413 4"	#8250727 4"
#9095445 4" R&R	#10569639 6" R&R



Aftercoolers For EMD Engines

#8409891	10 Row 2 Pass, 2 Flange
#8365645	10 Row 2 Pass, 2 Flange
#9541961	12 Row 2 Pass, 2 Flange
#40020885	12 Row 4 Pass, 2 Flange
#40046710	12 Row 4 Pass, 4 Flange
#40113590, #40046710	12 Row 4, Flange, Small
#40113591	12 Row, 4 Pass, 4 Flange, Large



Since 1988, EngineAir has been proudly remanufacturing mechanically bonded heat exchange components to the Class I's, Shortlines, Industrials & Rebuilders. We take great pride in the quality of our rebuilds and provide the best rebuilds in the industry.

EngineAir is AAR M1003 registered.

ASSOCIATION OF AMERICAN RAILROADS
QUALITY ASSURANCE PROGRAM CERTIFICATION



Water Pumps

For EMD Engines LEFT BANK

#40004234 Large
REPLACES: #9530407, #9332325, #8347607
#9336390, #8269638 Medium
#40004236 Small
REPLACES: #8058624, #8122874, #9516925



For EMD Engines RIGHT BANK

#40004235 Large
REPLACES: #9511979, #9530406, #8249002,
#9510677
#8269664, #8296348 Medium
#40004237 Small
REPLACES: #8058625, #8122879, #9516924,
#9519620



For GE Engines

#125x1111, #125x1115 #125x1072-1

GE Oil Pumps

V16= #139x1271
V12= #139x1297
#139x1296
#139x1246



Radiators

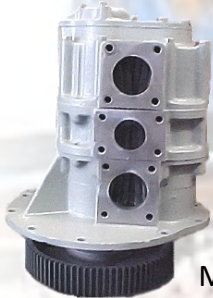
For GE Engines

#41D711033G10
#84D701689P1
#41D12040G4



4 Stage Scavenging Pump

EMD #40000226



2 Stage Pressure Pump

EMD #8122949



3 Stage Scavenging Pump

Many other part numbers available.

New and Remanufactured Radiators for EMD Engines

#8127126 Single 4" Radiator
#40037925 Double 4" Radiator
#40037937 Triple 4" Radiator
#8490482 Single 6" Radiator
#9583761 Double 6" Radiator
#9583760 Triple 6" Radiator
#9575387 Triple 8" Radiator
#40045650 Quad 8" Radiator

Many other part numbers available.

Fuel Pre-Heaters



For EMD Engines
#9517269, #9333522

For GE Engines
#41C619684P2
#41C640369G1



Call (812)522-7200
Email jmasales@jmasales.com

Hillcrest Camshaft Service



Setting the Standard for Excellence!



Hillcrest Camshaft Service specializes in new and remanufactured industrial camshafts, fuel injection cams and lifters. We also provide specialized chrome-plating and grinding on parts such as spindles, axles, transmission parts... just about anything that undergoes excessive wear from the bearings or seals.

**We stock a full range of industrial camshafts ready for immediate shipment, for 567, 645 & 710 engines.
New available / rebuilt units for UTEX.**

Repair & Return Options for GE, Alco, EMD and Caterpillar!

JMA RAILROAD
SUPPLY co.





Remanufacturing of Locomotive **CRANKSHAFTS!**

- ◆ Over 60 years of remanufacturing experience.
- ◆ Thorough 14 step remanufacturing process, meeting or exceeding all OEM requirements.
- ◆ State of the art grinding machines to ensure the quickest turn-around time.
- ◆ Precision shot peening & crankshaft straightening equipment.
- ◆ Magnaflux testing equipment.
- ◆ Crankshaft balancing equipment.
- ◆ Hard Chrome Plating.

Complete Rebuilds or Requalification available!



Call (812)522-7200
Email jmasales@jmasales.com

JMA RAIL PRODUCTS CO.



Air Compressors



Power Assemblies



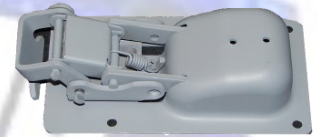
Toilets



Test Valves



Cab Fans



Car Body Door Latches



Filters



Couplers



Guru Valves



Water Treatments



Horns



Windows



Cooling Fans



Brake Heads

Air Compressors, Security Products, Cab Accessories, Truck & Wheel, Electrical Components, Engine Components, Brake Shoes, Rotating Electric and Maintenance of Way!

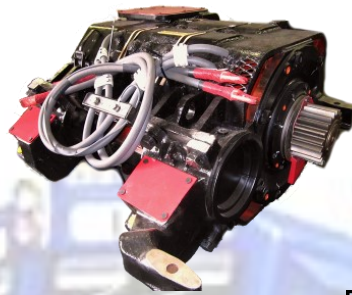


From Coupler to Coupler, We Have You Covered!

JMA Rail Products' commitment is to provide outstanding product support and superior service to our customers, while offering competitive pricing for the highest quality products.



Brake Shoes

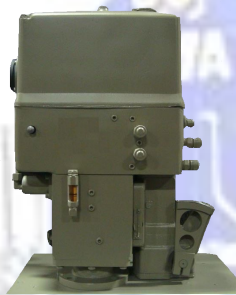


Traction Motors



Safety Signs

STOP
Men at
Work



Governors



Brushes



Railroad Ties



Track Matting



Snow Plows



Heaters



Spikes



Strip Heaters

JMA Rail Products prides itself on providing superior service to our customers. Our knowledgeable customer support team will help you determine the exact parts needed to meet your locomotive repair needs, at the same time providing quality products at the lowest possible cost.

JMA Rail Products component offering encompasses thousands of part numbers. Our large inventory of locomotive material allows us to promptly ship your orders, reducing expensive downtime.

Call (812)522-7200
Email jmasales@jmasales.com

New vision

Ceiling Repair Kits



Ceiling Repair Kit fig 1



Standard Ceiling Kit fig 2



Hard Panel Ceiling Kit fig 3

Hard Panel Ceiling Kits for Road Units & Switcher Locomotives!

5151052 "Ceiling Repair Kit" Hard Paneled Kit (fig. #1) Long term fix for old sagging panels

5151060 "Standard Ceiling Kit" Includes all trim pieces & panels required for new installation (fig. #2)

5151065 Complete Ceiling Kit" includes sub-Insulation

5151057 "Trim Only Kit" Includes: 9 black retainer strips, 1 "T", 2 angle, and 6 perimeter trim pieces

Additional Insulation available

To be installed between structure steel braces

5151050 Foam Ceiling insulation with pressure sensitive

5151051 Foam Ceiling insulation with pressure sensitive adhesive backing, sold as a roll of 50' x 54' x 1"

5151067 Standard hard panel Ceiling Kit" (fig #3)

Ceiling Panels

NV-1-37-76 Vinyl Foam Panel, Flexible
1" x 37" x 76"

NV-1-37-70 Vinyl Fiberglass Panel, Rigid,
1" x 37" x 70"

Trim Pieces

CM74-0013 T Trim Piece, male

CM74-0014 Black Retaining Channel, female

CM74-0015 Angle Trim Piece, male

CM74-0016 Perimeter Trim Piece, male



We Don't Take Vision Lightly!



A Style



B Style



A Style With
Mounting Bracket

Ditch Light Kits

A Style Single Ended Kit4141010

A Style Double Ended Kit4140103

B Style Single Ended Kit4142010

B Style Double Ended Kit 4144010

Housings

A Style Ditch Light Housing 4141012

B Style Ditch Light Housing 4142012

Lugs & Glad hands

Glad Hand to Blade AdapterNV2000

Lug, Traction Motor Lead, 1325 40039228

Lug, Car Body Side, 160040039229

Bulbs

75V Ditch Light Halogen Bulb6961711

30V Head Light Halogen Bulb8156001

LED Rough Service BulbNV6WLL

Rough Service Bulb8094886

15W, 75V Bulb.....8116330

2W, 6-8V Dash Bulb.....8140357

30W, 75V Bulb.....8190621

108W, 37.5V, 1828 Dash Bulb.....8190199

25W, 75V Bulb.....8080403

Walkway Ditch Light Mounting Bracket



4146011—Replaces P/N 40048386 & 40052347

- Pre-Drilled for either our A Style or B Style ditch-light housing
- Powder Coated for longer life
- Removable back for easy access and installation



New Vision began in 1994 with the objective of creating custom solutions for locomotive modifications. Over the years, New Vision has developed a variety of kits to solve problems. New Vision manufactures and supplies ceiling kits, ditch light kits, ditch light & headlight housings, halogen and LED bulbs, lugs, glad hands.

New Vision making safety and convenience top priority!

Call (812)522-7200
Email jmasales@jmasales.com



UNITED SAFETY & SURVIVABILITY CORPORATION™



9012 Seat



9010 Seat



9009 Seat

United Safety designs, engineers, and manufactures high quality seats for the locomotive industry. As a leader in the industry, United Safety continues to develop the most durable, comfortable, and ergonomically designed seats to reduce fatigue and stress.

Features Include:

- Swivel base
- Adjustable armrests
- Multiple upholstery options
- Adjustable mechanical lumbar

Components are available for ALL existing seats; knobs, levers, upholstery, armrests etc...

Model numbers 9012, 9010 & 9009 are available in pedestal, tripod, or wheeled tripod mounts.

**Military ergonomical studies incorporated
into all United Safety locomotive seats!**



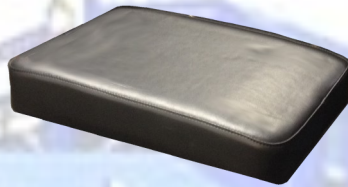
Manufacturing World-Class Locomotive Seating Since 1989



G2M Seat

Benefits:

- Seat Recline/Tilt
- Seat Rotation
- Ergonomic Design to Reduce Fatigue & Stress
- Adjustable Mechanical Lumbar Support
- Adjustable Back Recline
- Fore/Aft Adjustment
- Seat Cushion Slide
- Optional Scissor Mount Shown



Jump Seat

Benefits:

- Spring loaded brackets so seat stays in the up position when not used
- Durable Construction
- Space saver
- Quality vinyl cover for long life
- Heavy Duty Springs

Foot Rests

Benefits:

- Increase in operator comfort
- Assists in promoting optimum seating position which can positively effect seating posture for less fatigue
- Floor mount version shown (Wall Mount available)



Sun Shades



Interior View



Exterior/Reflective

Benefits:

- Improved Safety for Engineers
- Improved Visibility
- Cooler Cab Temperatures
- Energy Savings
- Widths available: 25.75", 45", 52.75"

United Safety is certified to AAR & FMVSS & ISO registered since 1987

Call (812)522-7200
Email jmasales@jmasales.com

High Security Electronic Locks & Keys



Multiple Locking Systems Available



Electronic Key Access and Auditing



Bluetooth Program/Auditing

- Secure & Safe
- Cost efficient & wireless
- Remotely controlled & adaptable
- Easy to use & encrypted
- Time based & interchangeable

ABLOY® PROTEC², which is based on the patented rotating disc cylinder mechanism, takes care of the mechanical security at your site, while electronic CLIQ technology allows flexible control of keys, access rights and audit trails. ABLOY® PROTEC² CLIQ combines both technologies into one effective solution.

Rail Switch Locks, Bungalow Locks & Shop Locks



FEATURES

- Multiple designs to fit any application
- Dual stainless steel ball bearings for heel/toe locking
- Accessories available
- Patented key control
- Maximum resistance against corrosion

- Boron steel shackles
- Extra large drainage holes for long lasting performance
- Rotating disc keying cylinder prevents lock picking
- The unique cylinder mechanism offers superior master-keying features



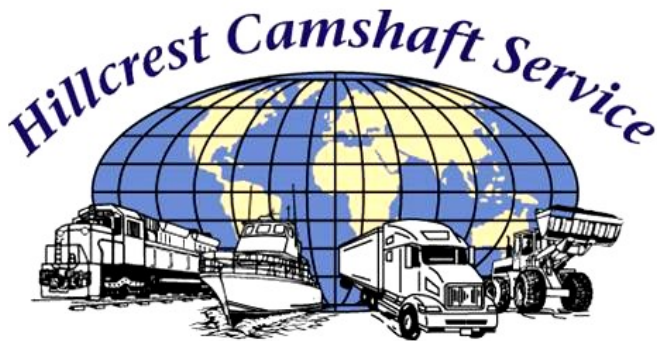


NOTES:

Call (812)522-7200
Email jmasales@jmasales.com



Proudly Representing



835 E. 10th St. Seymour, IN 47274

Phone: (812)522-7200 | Fax: (812)522-1150

jmasales@jmasales.com | www.jmarail.com